

Town of Buchanan

Comprehensive Plan Update

FEBRUARY 10TH, 2026



**East Central
Wisconsin**
REGIONAL PLANNING
COMMISSION

Agenda

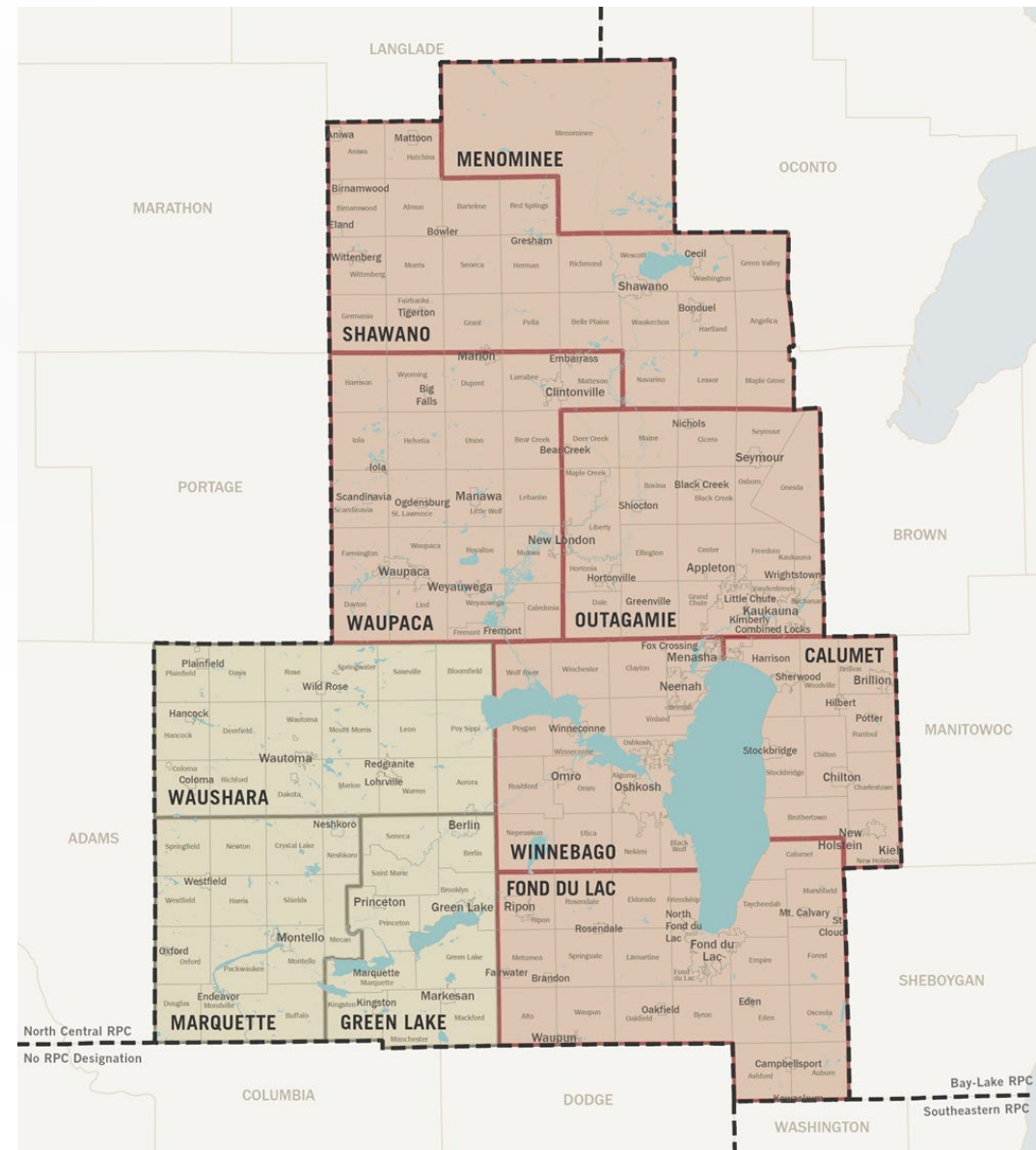
1. Introductions
2. Overview
3. Timeline
4. Responsibilities
5. Community Engagement
6. Next Steps



Overview

Who is ECWRPC?

- ECWRPC was established to serve as a coordinating organization between federal, state, and local governments.
- ECWRPC also provides planning services to individual units of government, including:
 - Transportation Planning
 - Water Quality Management Planning
 - Economic Development Planning
 - Comprehensive Planning
 - Comprehensive Outdoor Recreation Planning



Overview



- A COMP is a local government's guide to community physical, social and economic development, required by the WI Comprehensive Planning Law (s.66.1001) & must be updated no less than every 10 yrs
- They are critical documents that provide a basis for local land use decisions with a 20-year vision for planning.
- ECWRPC assists local communities with their Comprehensive Plan (COMP) updates



Overview



- A COMP must include the 9 elements identified in the Comprehensive Planning Law
- If a local government enacts or amends an official mapping, subdivision, or zoning ordinance, the enactment or amendment ordinance must be consistent with that community's comprehensive plan.
- The Town last adopted their plan in 2018



Concise Usable Plan

- East Central believes in concise user friendly plans. We want both practitioners and citizens to be able to easily read the document.
- Our new plan format is different from past plans. The plan is consolidated while still providing the statutorily requirements issued by the State.
- A lot of graphics and maps throughout the plan. Separate file of maps and graphics for individual use.

TABLE OF CONTENTS

CHAPTERS

06	Chapter 01. Introduction
14	Chapter 02. Recreational Resources
30	Chapter 03. Recreational Needs
42	Chapter 04. Community Voice
52	Chapter 05. Goals and Recommendations
72	Chapter 06. Resolution of Adoption

MAPS

10	Map 1-1. Town of Buchanan Location
12	Map 1-2. Community Overview
26	Map 2-1. Bicycle and Pedestrian Facilities
28	Map 2-2. Natural Resources
37	Map 3-1. Residential Areas Served by a Park
51	Map 4-1. Interactive Map Results
64	Map 5-1. Recommended Bicycle and Pedestrian Facilities

FIGURES

09	Figure 1-1. Plan Timeline
11	Figure 1-2. Town of Buchanan Quick Facts
31	Figure 3-1. Recreational Needs Assessment Components
33	Figure 3-2. Population Trends and Projections (2000-2040)
33	Figure 3-3. Median Age Trends (2010, 2022)
36	Figure 3-4. Acres of Parkland per 1,000 Residents (Communities <20,000 residents)

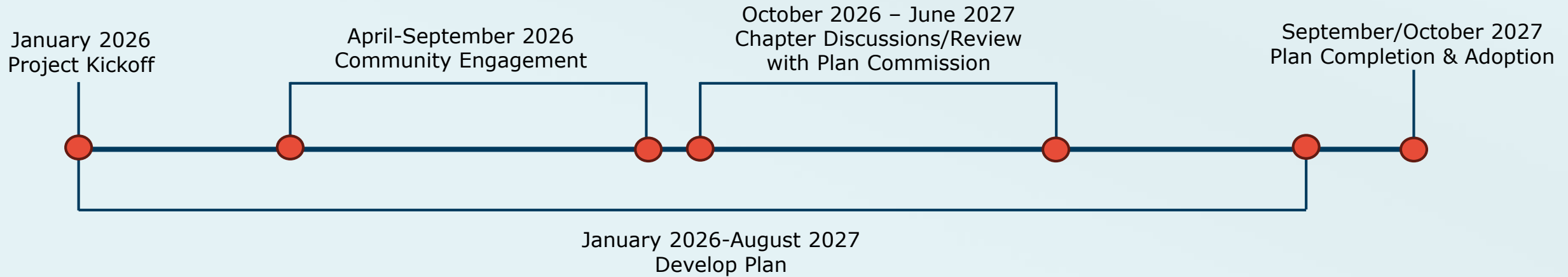


9 Elements

- Issues and Opportunities
- Housing
- Transportation
- Utilities and Community Facilities
- Agricultural, Natural and Cultural Resources
- Economic Development
- Intergovernmental Cooperation
- Land Use
- Implementation



Timeline



Responsibilities



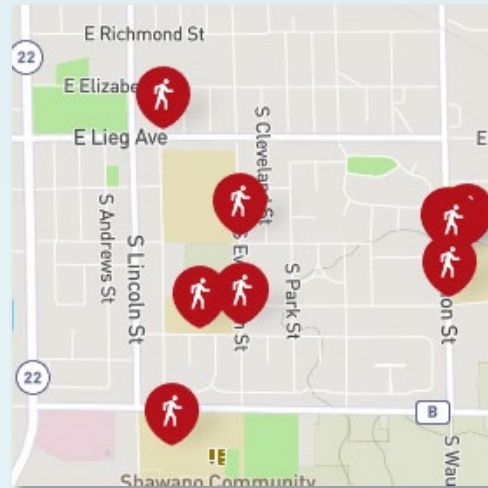
- Create and facilitate community engagement survey
- Work with Town Staff & Plan Commission to formulate plan goals and objectives
- Include 9 elements in plan
- Identify priorities based on survey results
- Update narratives and format plan



Community Engagement

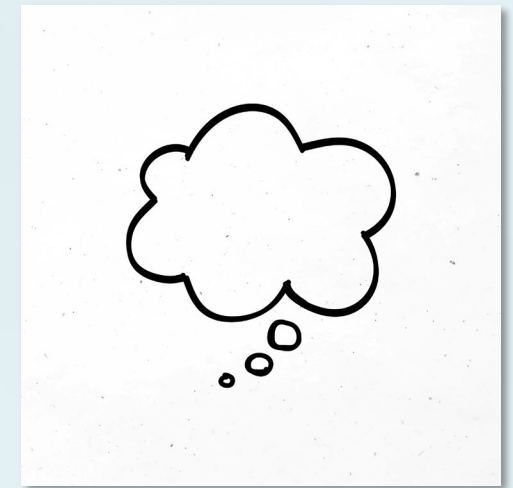


Traditional
Survey



Interactive Map

[Click here for Social Pinpoint](#)



Visioning
Session

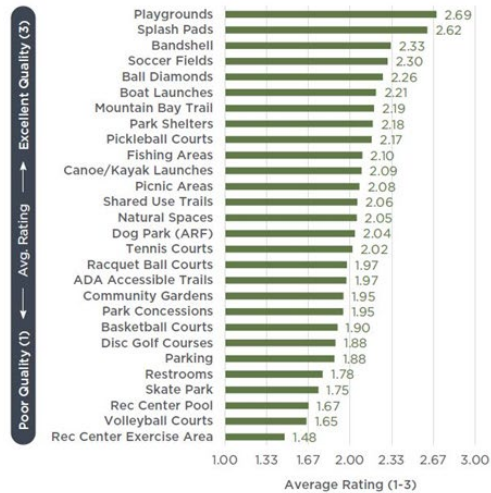


Social Pinpoint Website

SURVEY RESULTS

Q8 PART 1: IN YOUR OPINION, WHICH PARK FACILITIES NEED IMPROVEMENT IN THE CITY OF SHAWANO? PLEASE RATE THE QUALITY OF EACH FACILITY.

FIGURE 4-8. Q8 PART 1 RESULTS



RECREATION IN ALL SEASONS FOR ALL AGES

"The Rec Center should be the next area to be enlarged, modernized and improved. With programs for adults and teens. It isn't just kids who want and need activities! Adults need swimming lessons, tennis lessons, etc."

"Need more indoor basketball space..."

PARK AND FACILITY UPGRADES

"Eberlein park needs improvements."

"Feivor park needs an upgrade. All parks with wood chips are covered in thistles and I'm worried my kids will step on them."

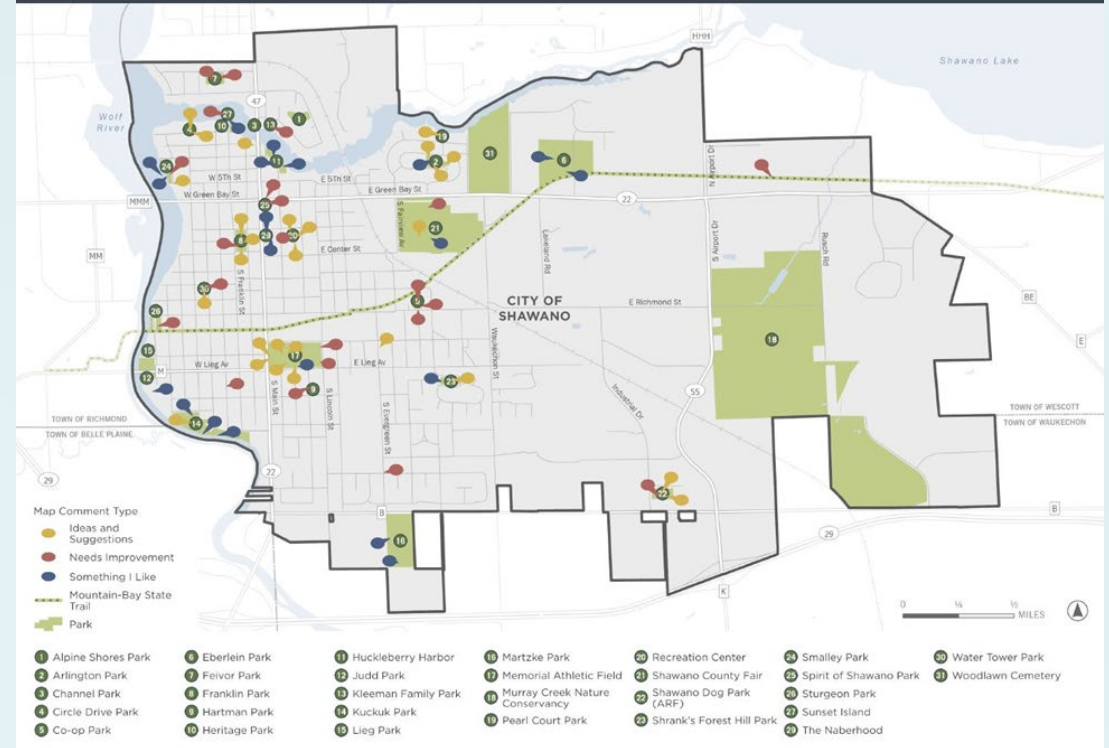
"Some parks could use more picnic tables."

BICYCLE AND PEDESTRIAN ENHANCEMENTS

"Quality of trails often poor, need gravel re supplied more often; better would be to pave more trail, esp for ADA access."

"Kukuck park needs new restroom facilities and lights along riverway for evenings when sun goes down."

MAP 4-1. INTERACTIVE MAP RESULTS



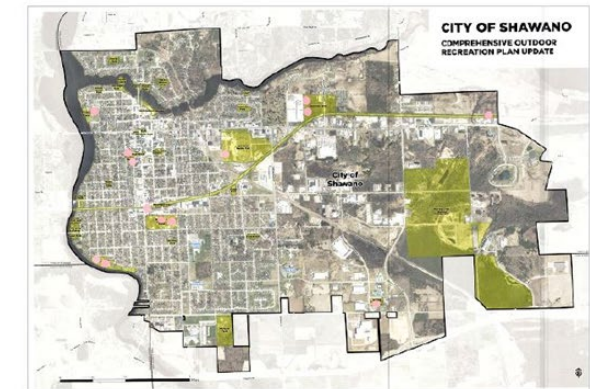
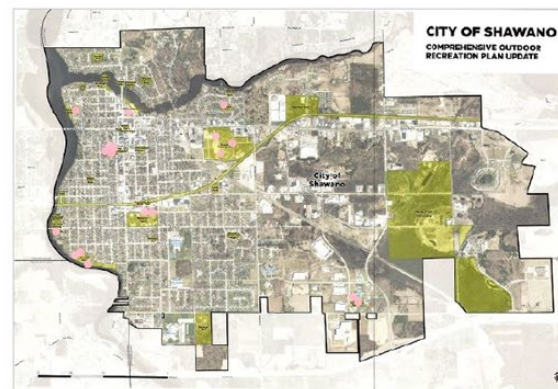
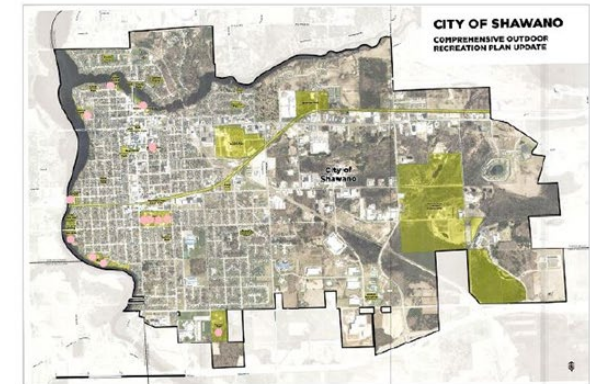
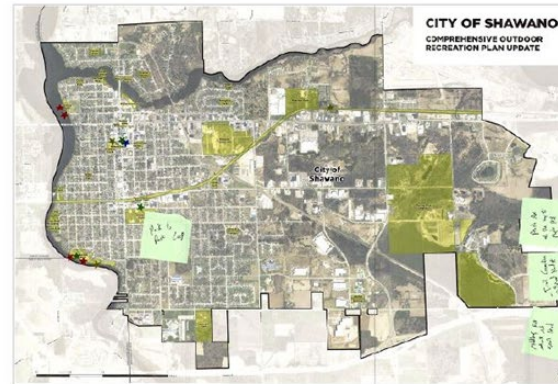
- Website landing page with links to survey and mapping application
- Customized survey with questions provided by us and approved by the municipality
- Mapping application to visually provide comments and input



In-Person Visioning

- In-person visioning session can be open to the public or with stakeholders (or both)
- Input on quality of life, development goals, and community needs
- Topics include housing, transportation, economic development, parks, environment, and community identity

IN-PERSON ENGAGEMENT RESULTS: "WHAT IS YOUR FAVORITE PARK?"



Questions?

Contact us:

Carmen Ebert

cebert@ecwrpc.org

920-886-6829

Joe Stephenson

jstephenson@ecwrpc.org

920-886-6832



East Central Wisconsin

REGIONAL PLANNING
COMMISSION

