

**TOWN OF BUCHANAN  
RESOLUTION NO. 2025-03**

**RESOLUTION OF THE TOWN BOARD OF THE TOWN OF BUCHANAN  
APPROVING A COMPREHENSIVE REZONING OF PARCELS IN THE TOWN OF  
BUCHANAN**

**WHEREAS**, the Town of Buchanan updated its Zoning Ordinance in 2024 and finds it is necessary to comprehensively rezone parcels in the Town of Buchanan that have inconsistent zoning and landuses and to create consistency with the Comprehensive Plan and Zoning Ordinance.

**WHEREAS**, the Plan Commission, after notice and public hearing on June 10, 2025, found the request to be consistent with the Comprehensive Plan and recommended the Town Board approve the rezoning; and

**NOW, THEREFORE, BE IT RESOLVED** that the Town Board of the Town of Buchanan hereby finds that the rezoning request is consistent with the Comprehensive Plan and approves the rezoning as shown on Exhibits A & B.

Adopted this 24th day of June 2025

  
Joseph Coenen, Town Chairperson

**ATTEST:**

  
Cynthia Sieracki, Clerk

Motion to Approve Resolution 2025-03 made by: *Knuppel/Meyer*

Votes:

Title	Name	Aye	Nay	Other
Supervisor I	Olson	X		
Supervisor II	Knuppel	X		
Supervisor III	Rottier	X		
Supervisor IV	Meyer	X		
Chairperson	Coenen	X		

Posted: June 25<sup>th</sup>, 2025

Parcel Number	Physical Address	Proposed Rezoning District Name	Existing Zoning District
030001301	W165 COUNTY RD ZZ	Rural Residential District	GENERAL AGRICULTURE
030002100	W290 COUNTY RD ZZ	Rural Residential District	GENERAL AGRICULTURE
030002201	W376 COUNTY RD ZZ	Rural Residential District	GENERAL AGRICULTURE
030002202	W385 COUNTY RD ZZ	Rural Residential District	GENERAL AGRICULTURE
030002401	W370 COUNTY RD ZZ	Rural Residential District	GENERAL AGRICULTURE
030003800	W189 NEW RD	Rural Residential District	GENERAL AGRICULTURE
030003802	W173 NEW RD	Rural Residential District	GENERAL AGRICULTURE
030003901	N1643 OUTAGAMIE RD	Rural Residential District	GENERAL AGRICULTURE
030004901	N1302 COUNTY RD GG	Rural Residential District	GENERAL AGRICULTURE
030005401	N1365 OUTAGAMIE RD	Rural Residential District	GENERAL AGRICULTURE
030005402	N1305 OUTAGAMIE RD	Rural Residential District	GENERAL AGRICULTURE
030005500	W604 COUNTY RD ZZ	Rural Residential District	GENERAL AGRICULTURE
030005501	W635 COUNTY RD ZZ	Rural Residential District	GENERAL AGRICULTURE
030005801	W641 COUNTY RD ZZ	Rural Residential District	GENERAL AGRICULTURE
030005902	N1527 COUNTY RD GG	Rural Residential District	GENERAL AGRICULTURE
030005903	W554 FELDKAMP RD	Rural Residential District	GENERAL AGRICULTURE
030006201	ANDREA LA	Rural Residential District	GENERAL AGRICULTURE
030006202	ANDREA LA	Rural Residential District	GENERAL AGRICULTURE
030006203	ANDREA LA	Rural Residential District	GENERAL AGRICULTURE
030006204	N1383 ANDREA LA	Rural Residential District	GENERAL AGRICULTURE
030006205	N1395 ANDREA LA	Rural Residential District	GENERAL AGRICULTURE
030006400	W750 COUNTY RD ZZ	Rural Residential District	GENERAL AGRICULTURE
030006500	W749 COUNTY RD ZZ	Rural Residential District	GENERAL AGRICULTURE
030006701	W798 COUNTY RD ZZ	Rural Residential District	GENERAL AGRICULTURE
030006702	W804 COUNTY RD ZZ	Rural Residential District	GENERAL AGRICULTURE
030006800	W806 NACKERS RD	Rural Residential District	GENERAL AGRICULTURE
030006900	W780 COUNTY RD ZZ	Rural Residential District	GENERAL AGRICULTURE
030007000	W776 COUNTY RD ZZ	Rural Residential District	GENERAL AGRICULTURE
030007100		Rural Residential District	GENERAL AGRICULTURE
030007200	W740 NACKERS RD	Rural Residential District	GENERAL AGRICULTURE
030007201	W750 NACKERS RD	Rural Residential District	GENERAL AGRICULTURE
030008001	W790 COUNTY RD ZZ	Rural Residential District	GENERAL AGRICULTURE
030008002	W792 COUNTY RD ZZ	Rural Residential District	GENERAL AGRICULTURE
030008100	W966 COUNTY RD ZZ	Rural Residential District	GENERAL AGRICULTURE
030008101	W904 COUNTY RD ZZ	Rural Residential District	GENERAL AGRICULTURE
030008102	N1291 EAGLE RD	Rural Residential District	GENERAL AGRICULTURE
030008103	N1285 EAGLE RD	Rural Residential District	GENERAL AGRICULTURE
030008104	N1230 EAGLE RD	Rural Residential District	GENERAL AGRICULTURE
030008105	N1294 EAGLE RD	Rural Residential District	GENERAL AGRICULTURE
030008107	W914 COUNTY RD ZZ	Rural Residential District	GENERAL AGRICULTURE
030008108	W926 COUNTY RD ZZ	Rural Residential District	GENERAL AGRICULTURE
030008109	N1273 EAGLE RD	Rural Residential District	GENERAL AGRICULTURE
030008110	N1257 EAGLE RD	Rural Residential District	GENERAL AGRICULTURE
030008111		Rural Residential District	GENERAL AGRICULTURE
030008200	W1060 COUNTY RD ZZ	Rural Residential District	GENERAL AGRICULTURE
030008201	W1076 COUNTY RD ZZ	Rural Residential District	GENERAL AGRICULTURE
030008300	N1103 FOX RIVER RD	Rural Residential District	GENERAL AGRICULTURE
030008301	W1055 COUNTY RD ZZ	Rural Residential District	GENERAL AGRICULTURE
030008400	W1022 COUNTY RD ZZ	Rural Residential District	GENERAL AGRICULTURE
030008500	W1020 COUNTY RD ZZ	Rural Residential District	GENERAL AGRICULTURE
030008600	W1016 COUNTY RD ZZ	Rural Residential District	GENERAL AGRICULTURE
030008800	N1037 WOODLY RD	Rural Residential District	GENERAL AGRICULTURE
030008801	W1178 PELICAN LA	Rural Residential District	GENERAL AGRICULTURE
030008802	N1069 WOODLY RD	Rural Residential District	GENERAL AGRICULTURE
030008803	N1098 WOODLY RD	Rural Residential District	GENERAL AGRICULTURE
030008806	N1045 WOODLY RD	Rural Residential District	GENERAL AGRICULTURE
030008807	N1058 WOODLY RD	Rural Residential District	GENERAL AGRICULTURE
030008808	N1060 WOODLY RD	Rural Residential District	GENERAL AGRICULTURE
030009300		Rural Residential District	GENERAL AGRICULTURE
030009400	W1220 COUNTY RD Z	Rural Residential District	GENERAL AGRICULTURE
030009500	W1224 COUNTY RD Z	Rural Residential District	GENERAL AGRICULTURE
030009700	N937 COUNTY RD ZZ	Rural Residential District	GENERAL AGRICULTURE
030009702	W1180 COUNTY RD Z	Rural Residential District	GENERAL AGRICULTURE
030009703	W1184 COUNTY RD Z	Rural Residential District	GENERAL AGRICULTURE
030009803	W966 COUNTY RD Z	Rural Residential District	GENERAL AGRICULTURE
030009901	W1075 COUNTY RD ZZ	Rural Residential District	GENERAL AGRICULTURE
030010000	W1080 COUNTY RD ZZ	Rural Residential District	GENERAL AGRICULTURE
030010100	N940 COUNTY RD ZZ	Rural Residential District	GENERAL AGRICULTURE
030010300	W1076 COUNTY RD Z	Rural Residential District	GENERAL AGRICULTURE
030010301	N922 COUNTY RD ZZ	Rural Residential District	GENERAL AGRICULTURE
030010600	W988 COUNTY RD Z	Rural Residential District	GENERAL AGRICULTURE
030011201	W870 COUNTY RD ZZ	Rural Residential District	GENERAL AGRICULTURE
030011400	W857 COUNTY RD ZZ	Rural Residential District	GENERAL AGRICULTURE
030011900	W828 COUNTY RD Z	Rural Residential District	GENERAL AGRICULTURE
030012001	W790 COUNTY RD Z	Rural Residential District	GENERAL AGRICULTURE
030012100	N1024 COUNTY RD GG	Rural Residential District	GENERAL AGRICULTURE
030012101	N1030 COUNTY RD GG	Rural Residential District	GENERAL AGRICULTURE
030012500	N1213 OUTAGAMIE RD	Rural Residential District	GENERAL AGRICULTURE
030012600	W225 EIMMERMAN DR	Rural Residential District	GENERAL AGRICULTURE

030012601	N1230 CLUNE RD	Rural Residential District	GENERAL AGRICULTURE
030012602	N1206 CLUNE RD	Rural Residential District	GENERAL AGRICULTURE
030012603	N1196 CLUNE RD	Rural Residential District	GENERAL AGRICULTURE
030012604	N1212 CLUNE RD	Rural Residential District	GENERAL AGRICULTURE
030012605	N1242 CLUNE RD	Rural Residential District	GENERAL AGRICULTURE
030012606	N1299 GERRITS DR	Rural Residential District	GENERAL AGRICULTURE
030012607	N1284 CLUNE RD	Rural Residential District	GENERAL AGRICULTURE
030012609	N1280 CLUNE RD	Rural Residential District	GENERAL AGRICULTURE
030012610	W208 EIMMERMAN DR	Rural Residential District	GENERAL AGRICULTURE
030012701	N1160 CLUNE RD	Rural Residential District	GENERAL AGRICULTURE
030012702	N1150 CLUNE RD	Rural Residential District	GENERAL AGRICULTURE
030012800	N1215 OUTAGAMIE RD	Rural Residential District	GENERAL AGRICULTURE
030012802	W164 CLANCY LAMERS RD	Rural Residential District	GENERAL AGRICULTURE
030012900	N1237 CLUNE RD	Rural Residential District	GENERAL AGRICULTURE
030012902	N1283 CLUNE RD	Rural Residential District	GENERAL AGRICULTURE
030013001	W496 JILLIAN CT	Rural Residential District	GENERAL AGRICULTURE
030013002	W486 JILLIAN CT	Rural Residential District	GENERAL AGRICULTURE
030013004	W483 JILLIAN CT	Rural Residential District	GENERAL AGRICULTURE
030013005	N1220 COUNTY RD GG	Rural Residential District	GENERAL AGRICULTURE
030013101	N1242 COUNTY RD GG	Rural Residential District	GENERAL AGRICULTURE
030013102	COUNTY RD GG	Public & Institutional District	GENERAL AGRICULTURE
030013103	COUNTY RD GG	Rural Residential District	GENERAL AGRICULTURE
030013104	N1146 COUNTY RD GG	Rural Residential District	GENERAL AGRICULTURE
030013201	N1145 CLUNE RD	Rural Residential District	GENERAL AGRICULTURE
030013701	N1091 OUTAGAMIE RD	Rural Residential District	GENERAL AGRICULTURE
030013702	N1073 OUTAGAMIE RD	Rural Residential District	GENERAL AGRICULTURE
030013703	N1065 OUTAGAMIE RD	Rural Residential District	GENERAL AGRICULTURE
030013704	W131 ROLLING ACRES CT	Rural Residential District	GENERAL AGRICULTURE
030013705	N1035 OUTAGAMIE RD	Rural Residential District	GENERAL AGRICULTURE
030014102	N941 OUTAGAMIE RD	Rural Residential District	GENERAL AGRICULTURE
030014601	W347 COUNTY RD Z	Rural Residential District	GENERAL AGRICULTURE
030014602	W395 COUNTY RD Z	Rural Residential District	GENERAL AGRICULTURE
030015100	N696 POWERS RD	Rural Residential District	GENERAL AGRICULTURE
030015500	W180 SUNSET VIEW CI	Public & Institutional District	GENERAL AGRICULTURE
030015501	W176 SUNSET VIEW CI	Rural Residential District	GENERAL AGRICULTURE
030015504	W217 MEADOW RIDGE TR	Rural Residential District	GENERAL AGRICULTURE
030015505	W278 SUNSET VIEW CI	Rural Residential District	GENERAL AGRICULTURE
030015506	W260 SUNSET VIEW CI	Rural Residential District	GENERAL AGRICULTURE
030015507	W224 SUNSET VIEW CI	Rural Residential District	GENERAL AGRICULTURE
030015508		Rural Residential District	GENERAL AGRICULTURE
030015509	W194 SUNSET VIEW CI	Rural Residential District	GENERAL AGRICULTURE
030015510	W175 SUNSET VIEW CI	Rural Residential District	GENERAL AGRICULTURE
030015511		Rural Residential District	GENERAL AGRICULTURE
030015512	W170 DAYLIGHT CT	Rural Residential District	GENERAL AGRICULTURE
030015513	W134 DAYLIGHT CT	Rural Residential District	GENERAL AGRICULTURE
030015514	W126 DAYLIGHT CT	Rural Residential District	GENERAL AGRICULTURE
030015515	W127 DAYLIGHT CT	Rural Residential District	GENERAL AGRICULTURE
030015516	W139 DAYLIGHT CT	Rural Residential District	GENERAL AGRICULTURE
030015517		Rural Residential District	GENERAL AGRICULTURE
030015518		Rural Residential District	GENERAL AGRICULTURE
030015519		Rural Residential District	GENERAL AGRICULTURE
030015520		Rural Residential District	GENERAL AGRICULTURE
030015521		Rural Residential District	GENERAL AGRICULTURE
030015522		Rural Residential District	GENERAL AGRICULTURE
030015523	W189 DAYLIGHT CT	Rural Residential District	GENERAL AGRICULTURE
030015524	W225 SUNSET VIEW CI	Rural Residential District	GENERAL AGRICULTURE
030015525		Rural Residential District	GENERAL AGRICULTURE
030015526	W249 SUNSET VIEW CI	Rural Residential District	GENERAL AGRICULTURE
030015527	W257 SUNSET VIEW CI	Rural Residential District	GENERAL AGRICULTURE
030015528	W265 SUNSET VIEW CI	Rural Residential District	GENERAL AGRICULTURE
030015529		Rural Residential District	GENERAL AGRICULTURE
030015601		Public & Institutional District	GENERAL AGRICULTURE
030015801	W196 WEILER RD	Public & Institutional District	GENERAL AGRICULTURE
030015900	W158 WEILER RD	Rural Residential District	GENERAL AGRICULTURE
030016200	N884 COUNTY RD GG	Rural Residential District	GENERAL AGRICULTURE
030016601	W799 COUNTY RD Z	Rural Residential District	GENERAL AGRICULTURE
030016700	N888 KAVANAUGH RD	Rural Residential District	GENERAL AGRICULTURE
030017501	N660 COUNTY RD GG	Two-Family Residential District	TWO FAMILY RESIDENTIAL, GENERAL AGRICULTURE
030017502	COUNTY RD GG	Rural Residential District	GENERAL AGRICULTURE
030017601	N521 COUNTY RD GG	Rural Residential District	GENERAL AGRICULTURE
030017700	N507 COUNTY RD GG	Rural Residential District	GENERAL AGRICULTURE
030019000	W1262 KILLIAN DR	General Agricultural District	GENERAL AGRICULTURE, INDUSTRIAL
030019202	W1252 COUNTY RD CE	Local Commercial District	GENERAL AGRICULTURE
030019600		General Agricultural District	GENERAL AGRICULTURE, INDUSTRIAL
030020505	KAVANAUGH RD	Rural Residential District	GENERAL AGRICULTURE
030020506	N571 KAVANAUGH RD	Rural Residential District	GENERAL AGRICULTURE
030020507	N563 KAVANAUGH RD	Rural Residential District	GENERAL AGRICULTURE
030020509	W978 COUNTY RD CE	Local Commercial District	GENERAL AGRICULTURE
030023300	W1150 COUNTY RD KK	Industrial District	INDUSTRIAL, LOCAL COMMERCIAL, GENERAL AGRICULTURE
030024001	W1062 COUNTY RD KK	Industrial District	INDUSTRIAL, LOCAL COMMERCIAL, GENERAL AGRICULTURE

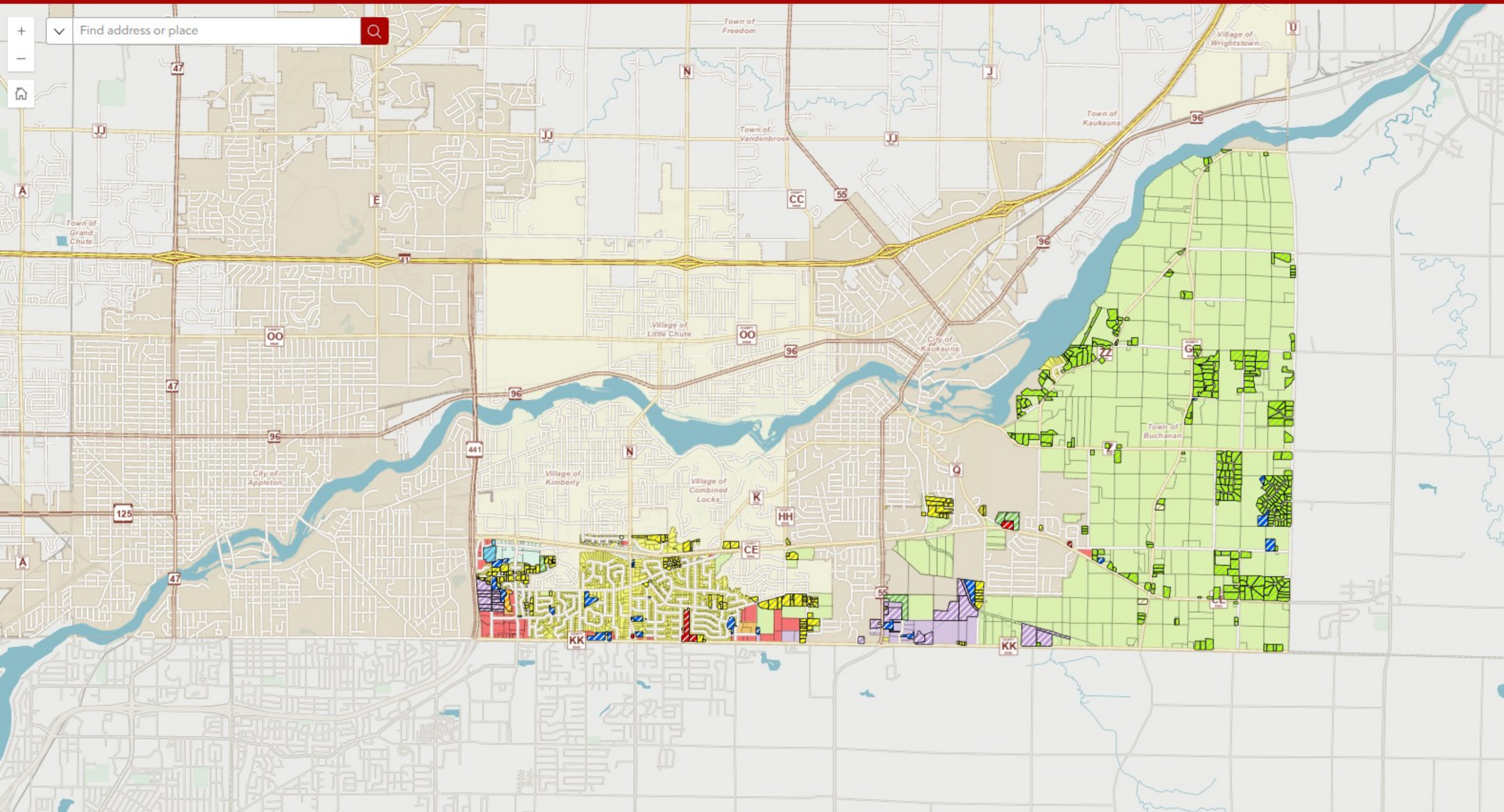
030024002	W1094 COUNTY RD KK	Rural Residential District	GENERAL AGRICULTURE
030024605	N406 COUNTY RD GG	Rural Residential District	GENERAL AGRICULTURE
030024606	N446 COUNTY RD GG	Rural Residential District	GENERAL AGRICULTURE
030024607	N418 COUNTY RD GG	Rural Residential District	GENERAL AGRICULTURE
030024702	N394 COUNTY RD GG	Rural Residential District	GENERAL AGRICULTURE
030024703	N332 COUNTY RD GG	Rural Residential District	GENERAL AGRICULTURE
030024705	N345 COUNTY RD GG	Rural Residential District	GENERAL AGRICULTURE
030024706	N344 COUNTY RD GG	Rural Residential District	GENERAL AGRICULTURE
030024900	W588 COUNTY RD CE	Rural Residential District	GENERAL AGRICULTURE
030025100	W798 COUNTY RD CE	Rural Residential District	GENERAL AGRICULTURE
030025300	W879 WEILER RD	Rural Residential District	GENERAL AGRICULTURE
030025303	W840 COUNTY RD CE	Rural Residential District	GENERAL AGRICULTURE
030025306	W857 WEILER RD	Rural Residential District	GENERAL AGRICULTURE
030025309	W886 COUNTY RD CE	Rural Residential District	GENERAL AGRICULTURE
030025311		Public & Institutional District	GENERAL AGRICULTURE
030025601	W730 COUNTY RD CE	Rural Residential District	GENERAL AGRICULTURE
030025602		Rural Residential District	GENERAL AGRICULTURE
030026501	N200 COUNTY RD GG	Rural Residential District	GENERAL AGRICULTURE
030026502		Rural Residential District	GENERAL AGRICULTURE
030026701	N201 COUNTY RD GG	Rural Residential District	GENERAL AGRICULTURE
030026702		Rural Residential District	GENERAL AGRICULTURE
030026703	N239 COUNTY RD GG	Rural Residential District	GENERAL AGRICULTURE
030026704	N281 COUNTY RD GG	Two-Family Residential District	GENERAL AGRICULTURE
030027101	N486 HAEN RD	Rural Residential District	GENERAL AGRICULTURE
030027200	W251 JAN CT	Rural Residential District	GENERAL AGRICULTURE
030027201	N314 HAEN RD	Rural Residential District	GENERAL AGRICULTURE
030027202	N328 HAEN RD	Rural Residential District	GENERAL AGRICULTURE
030027203	W292 JAN CT	Rural Residential District	GENERAL AGRICULTURE
030027204	N366 HAEN RD	Rural Residential District	GENERAL AGRICULTURE
030027205	W248 JAN CT	Rural Residential District	GENERAL AGRICULTURE
030027206	W256 JAN CT	Rural Residential District	GENERAL AGRICULTURE
030027207	W260 JAN CT	Rural Residential District	GENERAL AGRICULTURE
030027208	W289 JAN CT	Rural Residential District	GENERAL AGRICULTURE
030027301	N351 OUTAGAMIE RD	Rural Residential District	GENERAL AGRICULTURE
030027303		Rural Residential District	GENERAL AGRICULTURE
030027400	W114 COUNTY RD CE	Rural Residential District	GENERAL AGRICULTURE
030027500	W387 WEILER RD	Rural Residential District	GENERAL AGRICULTURE
030027501	W345 WEILER RD	Rural Residential District	GENERAL AGRICULTURE
030027502	N441 HAEN RD	Rural Residential District	GENERAL AGRICULTURE
030027503	N483 HAEN RD	Rural Residential District	GENERAL AGRICULTURE
030027504	N415 HAEN RD	Rural Residential District	GENERAL AGRICULTURE
030027506	W377 WEILER RD	Rural Residential District	GENERAL AGRICULTURE
030027800	W422 COUNTY RD CE	Rural Residential District	GENERAL AGRICULTURE
030027900	W458 COUNTY RD CE	Rural Residential District	GENERAL AGRICULTURE
030028001	N359 HAEN RD	Rural Residential District	GENERAL AGRICULTURE
030028003	W376 COUNTY RD CE	Rural Residential District	GENERAL AGRICULTURE
030028004		Rural Residential District	GENERAL AGRICULTURE
030028005	N316 HAEN RD	Rural Residential District	GENERAL AGRICULTURE
030028006	N337 HAEN RD	Rural Residential District	GENERAL AGRICULTURE
030028101	N215 HAEN RD	Rural Residential District	GENERAL AGRICULTURE
030028102	N225 HAEN RD	Rural Residential District	GENERAL AGRICULTURE
030028103	W313 COUNTY RD CE	Rural Residential District	GENERAL AGRICULTURE
030028501	W400 COUNTY RD KK	Rural Residential District	GENERAL AGRICULTURE
030028503	W472 COUNTY RD KK	Rural Residential District	GENERAL AGRICULTURE
030028504	W440 COUNTY RD KK	Rural Residential District	GENERAL AGRICULTURE
030029100	W156 COUNTY RD KK	Rural Residential District	GENERAL AGRICULTURE
030029200	W188 COUNTY RD KK	Rural Residential District	GENERAL AGRICULTURE
030029300	W176 COUNTY RD KK	Rural Residential District	GENERAL AGRICULTURE
030029500	W142 COUNTY RD KK	Rural Residential District	GENERAL AGRICULTURE
030029900	KILLIAN DR	Single-Family Residential District	GENERAL AGRICULTURE
030030200	W1346 COUNTY RD Q	Single-Family Residential District	GENERAL AGRICULTURE
030031500		Single-Family Residential District	GENERAL AGRICULTURE
030031503	W1470 PETERS RD	Single-Family Residential District	GENERAL AGRICULTURE
030031504	W1431 PETERS RD	Single-Family Residential District	GENERAL AGRICULTURE
030031505	N639 PETERS RD	Single-Family Residential District	GENERAL AGRICULTURE
030031507	W1419 PETERS RD	Single-Family Residential District	GENERAL AGRICULTURE
030031508	W1413 PETERS RD	Single-Family Residential District	GENERAL AGRICULTURE
030031509	W1441 MAES CT	Single-Family Residential District	GENERAL AGRICULTURE
030031510	W1440 MAES CT	Single-Family Residential District	GENERAL AGRICULTURE
030031511	W1428 MAES CT	Single-Family Residential District	GENERAL AGRICULTURE
030031514	W1410 MAES CT	Single-Family Residential District	GENERAL AGRICULTURE
030031516		Single-Family Residential District	GENERAL AGRICULTURE
030035500	COUNTY RD CE	Single-Family Residential District	GENERAL AGRICULTURE
030035701	W2326 BLOCK RD	Single-Family Residential District	GENERAL AGRICULTURE
030035800	W2379 BUCHANAN RD	Single-Family Residential District	GENERAL AGRICULTURE
030036200	W2352 BLOCK RD	Single-Family Residential District	GENERAL AGRICULTURE
030036204	W2356 BLOCK RD	Single-Family Residential District	GENERAL AGRICULTURE
030036500	W2390 BLOCK RD	Single-Family Residential District	GENERAL AGRICULTURE
030036901	BUCHANAN RD	Single-Family Residential District	GENERAL AGRICULTURE
030036902		Single-Family Residential District	GENERAL AGRICULTURE

030037100	COUNTY RD CE	Single-Family Residential District	GENERAL AGRICULTURE
030038403	RAILROAD ST	Single-Family Residential District	GENERAL AGRICULTURE
030038408	N439 RAILROAD ST	Single-Family Residential District	GENERAL AGRICULTURE
030038409	N427 RAILROAD ST	Single-Family Residential District	GENERAL AGRICULTURE
030039700	N451 RAILROAD ST	Single-Family Residential District	GENERAL AGRICULTURE
030039800	N437 RAILROAD ST	Single-Family Residential District	GENERAL AGRICULTURE
030039901	W3056 CREEKVIEW LA	General Agricultural District	GENERAL AGRICULTURE, SINGLE FAMILY RESIDENTIAL
030039903	N422 DONS DR	Single-Family Residential District	GENERAL AGRICULTURE
030039906	DONS DR	Single-Family Residential District	GENERAL AGRICULTURE
030040001	W3094 CREEKVIEW LA	Single-Family Residential District	GENERAL AGRICULTURE
030040002	W3086 CREEKVIEW LA	Single-Family Residential District	GENERAL AGRICULTURE
030040003	W3074 CREEKVIEW LA	Single-Family Residential District	GENERAL AGRICULTURE
030040101	W3110 CREEKVIEW LA	Single-Family Residential District	GENERAL AGRICULTURE
030040102	W3118 CREEKVIEW LA	Single-Family Residential District	GENERAL AGRICULTURE
030040400	W3122 CREEKVIEW LA	Single-Family Residential District	GENERAL AGRICULTURE
030040600	W3146 CREEKVIEW LA	Single-Family Residential District	GENERAL AGRICULTURE
030040701	W3186 CREEKVIEW LA	Single-Family Residential District	GENERAL AGRICULTURE
030040702	CREEKVIEW LA	Single-Family Residential District	GENERAL AGRICULTURE
030041001	N368 CAROLS LA	Single-Family Residential District	GENERAL AGRICULTURE
030041100	W3206 CREEKVIEW LA	Two-Family Residential District	GENERAL AGRICULTURE
030041500	W3196 CREEKVIEW LA	Single-Family Residential District	GENERAL AGRICULTURE
030041501	W3190 CREEKVIEW LA	Single-Family Residential District	GENERAL AGRICULTURE
030041801	W3232 CREEKVIEW LA	Single-Family Residential District	GENERAL AGRICULTURE
030041802	N379 CAROLS LA	Single-Family Residential District	GENERAL AGRICULTURE
030042300	W3255 VAN ROY RD	Planned Commercial District	PLANNED COMMERCIAL, LOCAL COMMERCIAL
030042400	W3268 CREEKVIEW LA	Single-Family Residential District	GENERAL AGRICULTURE
030043100	W3302 CREEKVIEW LA	Single-Family Residential District	GENERAL AGRICULTURE
030050600	W3231 CREEKVIEW LA	Single-Family Residential District	GENERAL AGRICULTURE
030050602	W3205 CREEKVIEW LA	Single-Family Residential District	GENERAL AGRICULTURE
030050603	W3187 CREEKVIEW LA	Single-Family Residential District	GENERAL AGRICULTURE
030050604	W3175 CREEKVIEW LA	Single-Family Residential District	GENERAL AGRICULTURE
030050605	W3123 CREEKVIEW LA	Single-Family Residential District	GENERAL AGRICULTURE
030050607	W3135 CREEKVIEW LA	Single-Family Residential District	GENERAL AGRICULTURE
030050608		Public & Institutional District	LOCAL COMMERCIAL, MULTI-FAMILY RESIDENTIAL, GENERAL AGRICULTURE
030050611	W3197 CREEKVIEW LA	Single-Family Residential District	GENERAL AGRICULTURE
030050612	N325 PINECREST BL	Single-Family Residential District	GENERAL AGRICULTURE
030050700	W3111 CREEKVIEW LA	Single-Family Residential District	GENERAL AGRICULTURE
030050800	W3225 CREEKVIEW LA	Single-Family Residential District	GENERAL AGRICULTURE
030050900	W3277 CREEKVIEW LA	Industrial District	LOCAL COMMERCIAL, GENERAL AGRICULTURE
030051000	W3289 CREEKVIEW LA	Single-Family Residential District	GENERAL AGRICULTURE
030051001	N321 STONEY BROOK RD	Single-Family Residential District	GENERAL AGRICULTURE
030051101	N239 PINECREST BL	Single-Family Residential District	GENERAL AGRICULTURE
030051102	N233 PINECREST BL	Single-Family Residential District	GENERAL AGRICULTURE
030051109	N287 MARIE CLAIRE DR	Multifamily Residential District	LOCAL COMMERCIAL, MULTI-FAMILY RESIDENTIAL
030051201	N294 STONEY BROOK RD	Industrial District	LOCAL COMMERCIAL, MULTI-FAMILY RESIDENTIAL
030051202	N282 STONEY BROOK RD	Industrial District	LOCAL COMMERCIAL, MULTI-FAMILY RESIDENTIAL
030051203	N278 STONEY BROOK RD	Industrial District	LOCAL COMMERCIAL
030051204	N266 STONEY BROOK RD	Industrial District	LOCAL COMMERCIAL
030051300	N257 STONEY BROOK RD	Industrial District	LOCAL COMMERCIAL
030051303	N289 STONEY BROOK RD	Industrial District	LOCAL COMMERCIAL
030051304	N275 STONEY BROOK RD	Industrial District	LOCAL COMMERCIAL
030051305	N253 STONEY BROOK RD	Industrial District	LOCAL COMMERCIAL
030051307	N245 STONEY BROOK RD	Industrial District	LOCAL COMMERCIAL
030051309		Single-Family Residential District	LOCAL COMMERCIAL, GENERAL AGRICULTURE
030051805	W3134 SPRINGFIELD DR	Two-Family Residential District	SINGLE FAMILY RESIDENTIAL
030051818	N195 EASTOWNE LA	Two-Family Residential District	SINGLE FAMILY RESIDENTIAL
030052401	N228 PINECREST BL	Single-Family Residential District	GENERAL AGRICULTURE
030052402	N254 PINECREST BL	Single-Family Residential District	GENERAL AGRICULTURE
030052403	W3021 EMONS RD	Single-Family Residential District	GENERAL AGRICULTURE
030052404	N212 PINECREST BL	Single-Family Residential District	GENERAL AGRICULTURE
030052406	W3000 SPRINGFIELD DR	Public & Institutional District	SINGLE FAMILY RESIDENTIAL
030053101	N319 HILLSIDE DR	Single-Family Residential District	GENERAL AGRICULTURE
030055803	W2881 EMONS RD	Public & Institutional District	SINGLE FAMILY RESIDENTIAL
030056500	W2806 COUNTY RD KK	Public & Institutional District	SINGLE FAMILY RESIDENTIAL
030057901	COUNTY RD KK	Public & Institutional District	SINGLE FAMILY RESIDENTIAL
030058000		Public & Institutional District	SINGLE FAMILY RESIDENTIAL
030058312	HANK DR	Public & Institutional District	SINGLE FAMILY RESIDENTIAL
030058403		Public & Institutional District	SINGLE FAMILY RESIDENTIAL
030058500	COUNTY RD N	Public & Institutional District	SINGLE FAMILY RESIDENTIAL
030058600	N178 COUNTY RD N	Public & Institutional District	SINGLE FAMILY RESIDENTIAL
030059300	N124 COUNTY RD N	Public & Institutional District	SINGLE FAMILY RESIDENTIAL
030059500	N121 COUNTY RD N	Local Commercial District	SINGLE FAMILY RESIDENTIAL
030060002	W2155 BLOCK RD	Single-Family Residential District	GENERAL AGRICULTURE
030060005		Public & Institutional District	GENERAL AGRICULTURE
030060901	W2418 COUNTY RD KK	Single-Family Residential District	GENERAL AGRICULTURE
030061000	W2484 COUNTY RD KK	Local Commercial District	GENERAL AGRICULTURE, LOCAL COMMERCIAL
030061002	N154 HOPFENSBERGER RD	Single-Family Residential District	GENERAL AGRICULTURE
030061100	W2410 COUNTY RD KK	Single-Family Residential District	GENERAL AGRICULTURE
030062300	N248 DEBRUIN RD	Single-Family Residential District	GENERAL AGRICULTURE
030062301		Single-Family Residential District	GENERAL AGRICULTURE

030062303	N242 DEBRUIN RD	Single-Family Residential District	GENERAL AGRICULTURE
030062304	N214 DEBRUIN RD	Single-Family Residential District	GENERAL AGRICULTURE
030062305	N238 DEBRUIN RD	Single-Family Residential District	GENERAL AGRICULTURE
030062309		Single-Family Residential District	GENERAL AGRICULTURE
030062310		Single-Family Residential District	GENERAL AGRICULTURE
030062311		Single-Family Residential District	GENERAL AGRICULTURE
030062401		Single-Family Residential District	GENERAL AGRICULTURE
030062402	N289 DEBRUIN RD	Single-Family Residential District	GENERAL AGRICULTURE
030062403		Single-Family Residential District	GENERAL AGRICULTURE
030062405	N297 DEBRUIN RD	Single-Family Residential District	GENERAL AGRICULTURE
030062407	N283 DEBRUIN RD	Single-Family Residential District	GENERAL AGRICULTURE
030062600	N241 DEBRUIN RD	Single-Family Residential District	GENERAL AGRICULTURE
030062601	DEBRUIN RD	Single-Family Residential District	GENERAL AGRICULTURE
030062700	N249 DEBRUIN RD	Single-Family Residential District	GENERAL AGRICULTURE
030062800	N245 DEBRUIN RD	Single-Family Residential District	GENERAL AGRICULTURE
030062900	N255 DEBRUIN RD	Single-Family Residential District	GENERAL AGRICULTURE
030063001	N155 DEBRUIN RD	Single-Family Residential District	GENERAL AGRICULTURE
030063002	N193 DEBRUIN RD	Single-Family Residential District	GENERAL AGRICULTURE
030063003	N185 DEBRUIN RD	Single-Family Residential District	GENERAL AGRICULTURE
030063004	N181 DEBRUIN RD	Single-Family Residential District	GENERAL AGRICULTURE
030063005	DEBRUIN RD	Single-Family Residential District	GENERAL AGRICULTURE
030063101	N145 DEBRUIN RD	Single-Family Residential District	GENERAL AGRICULTURE
030063102	N127 DEBRUIN RD	Single-Family Residential District	GENERAL AGRICULTURE
030063103	DEBRUIN RD	Single-Family Residential District	GENERAL AGRICULTURE
030063301	N164 DEBRUIN RD	Single-Family Residential District	GENERAL AGRICULTURE
030063302	N176 DEBRUIN RD	Single-Family Residential District	GENERAL AGRICULTURE
030063307	DEBRUIN RD	Single-Family Residential District	GENERAL AGRICULTURE
030063907	N173 STATE RD 55	Industrial District	LOCAL COMMERCIAL
030064003	N120 FIELDCREST DR	Industrial District	GENERAL AGRICULTURE
030064300	N337 LODERBAUER RD	Single-Family Residential District	GENERAL AGRICULTURE
030064301		Single-Family Residential District	GENERAL AGRICULTURE
030064302		Single-Family Residential District	GENERAL AGRICULTURE
030064400	COUNTY RD KK	Public & Institutional District	INDUSTRIAL, GENERAL AGRICULTURE
030064500	COUNTY RD KK	Industrial District	GENERAL AGRICULTURE
030065700	N250 STATE RD 55	General Agricultural District	GENERAL AGRICULTURE, SINGLE FAMILY RESIDENTIAL, PLANNED COMMERCIAL
030065800	N244 STATE RD 55	Single-Family Residential District	LOCAL COMMERCIAL
030065801	N236 STATE RD 55	Industrial District	LOCAL COMMERCIAL
030065901	N216 STATE RD 55	Industrial District	INDUSTRIAL, LOCAL COMMERCIAL
030066001	N260 STATE RD 55	Industrial District	INDUSTRIAL, SINGLE FAMILY RESIDENTIAL, GENERAL AGRICULTURE, LOCAL COMMERCIAL
030066204	N158 STATE RD 55	Public & Institutional District	LOCAL COMMERCIAL, INDUSTRIAL
030066511	W1560 COUNTY RD KK	Industrial District	LOCAL COMMERCIAL, INDUSTRIAL
030066513		Industrial District	LOCAL COMMERCIAL, INDUSTRIAL
030066700		Single-Family Residential District	GENERAL AGRICULTURE
030066701		Single-Family Residential District	GENERAL AGRICULTURE
030066702	N283 LODERBAUER RD	Single-Family Residential District	INDUSTRIAL
030066800	LODERBAUER RD	Industrial District	INDUSTRIAL, GENERAL AGRICULTURE
030066802		Industrial District	INDUSTRIAL, GENERAL AGRICULTURE
030067000	LODERBAUER RD	Industrial District	INDUSTRIAL, GENERAL AGRICULTURE
030067500	W1380 COUNTY RD KK	Single-Family Residential District	INDUSTRIAL
030067600	COUNTY RD KK	Single-Family Residential District	INDUSTRIAL
030067700	W1402 COUNTY RD KK	Single-Family Residential District	INDUSTRIAL
030067800	COUNTY RD KK	Single-Family Residential District	INDUSTRIAL
030067902	N436 DEBRUIN RD	Single-Family Residential District	GENERAL AGRICULTURE
030067904		Single-Family Residential District	GENERAL AGRICULTURE
030068100	N458 DEBRUIN RD	Single-Family Residential District	GENERAL AGRICULTURE
030070400	W2643 BUCHANAN RD	Single-Family Residential District	GENERAL AGRICULTURE
030070703	W2529 BROOKHAVEN CT	Single-Family Residential District	GENERAL AGRICULTURE, SINGLE FAMILY RESIDENTIAL
030070704	W2526 BROOKHAVEN DR	Single-Family Residential District	GENERAL AGRICULTURE, SINGLE FAMILY RESIDENTIAL
030070705	W2522 BROOKHAVEN DR	Single-Family Residential District	GENERAL AGRICULTURE, SINGLE FAMILY RESIDENTIAL
030070800		Single-Family Residential District	GENERAL AGRICULTURE
030070801		Single-Family Residential District	GENERAL AGRICULTURE
030071100	N398 COUNTY RD N	Public & Institutional District	SINGLE FAMILY RESIDENTIAL
030071101		Public & Institutional District	SINGLE FAMILY RESIDENTIAL
030074301	W2208 BLOCK RD	Single-Family Residential District	GENERAL AGRICULTURE
030074402	BLOCK RD	Single-Family Residential District	GENERAL AGRICULTURE
030074403	W2187 BLOCK RD	Single-Family Residential District	GENERAL AGRICULTURE
030074404	W2117 BLOCK RD	Single-Family Residential District	GENERAL AGRICULTURE
030170200	W3234 VAN ROY RD	Planned Commercial District	PLANNED COMMERCIAL, LOCAL COMMERCIAL
030170401		Public & Institutional District	PLANNED COMMERCIAL
030170601		Public & Institutional District	PLANNED COMMERCIAL
030171900	CREEKVIEW LA	Single-Family Residential District	PLANNED COMMERCIAL, TWO FAMILY RESIDENTIAL
030179600	W2736 BROOKHAVEN DR	Two-Family Residential District	TWO FAMILY RESIDENTIAL, GENERAL AGRICULTURE
030213000	N218 STONEY BROOK RD	Industrial District	LOCAL COMMERCIAL
030213001	N260 STONEY BROOK RD	Industrial District	LOCAL COMMERCIAL
030213002	N240 STONEY BROOK RD	Industrial District	LOCAL COMMERCIAL
030213101	N214 STONEY BROOK RD	Industrial District	LOCAL COMMERCIAL
030231600	W2446 COUNTY RD KK	Local Commercial District	SINGLE FAMILY RESIDENTIAL, LOCAL COMMERCIAL
030247300	N1123 CAITLIN WAY	Rural Residential District	GENERAL AGRICULTURE
030247400	N1157 CAITLIN WAY	Rural Residential District	GENERAL AGRICULTURE
030247500	N1185 CAITLIN WAY	Rural Residential District	GENERAL AGRICULTURE

030247600	N1191 CAITLIN WAY	Rural Residential District	GENERAL AGRICULTURE
030247700	N1213 CAITLIN WAY	Rural Residential District	GENERAL AGRICULTURE
030247800	N1233 JACOB CT	Rural Residential District	GENERAL AGRICULTURE
030247900	JACOB CT	Rural Residential District	GENERAL AGRICULTURE
030248000	N1256 JACOB CT	Rural Residential District	GENERAL AGRICULTURE
030248100	N1236 JACOB CT	Rural Residential District	GENERAL AGRICULTURE
030248200	N1194 CAITLIN WAY	Rural Residential District	GENERAL AGRICULTURE
030248300	N1170 CAITLIN WAY	Rural Residential District	GENERAL AGRICULTURE
030248400	W414 ALLISON DR	Rural Residential District	GENERAL AGRICULTURE
030251000	N409 FONTANA WAY	Single-Family Residential District	GENERAL AGRICULTURE
030251100	N419 FONTANA WAY	Single-Family Residential District	GENERAL AGRICULTURE
030251200	N425 FONTANA WAY	Single-Family Residential District	GENERAL AGRICULTURE
030251300	N429 FONTANA WAY	Single-Family Residential District	GENERAL AGRICULTURE
030251400	W2578 FONTANA WAY	Single-Family Residential District	GENERAL AGRICULTURE
030251500	W2570 FONTANA WAY	Single-Family Residential District	GENERAL AGRICULTURE
030251600	W2562 FONTANA WAY	Single-Family Residential District	GENERAL AGRICULTURE
030251700	W2554 FONTANA WAY	Single-Family Residential District	GENERAL AGRICULTURE
030251800	W2546 FONTANA WAY	Single-Family Residential District	GENERAL AGRICULTURE
030251900	W2549 FONTANA WAY	Single-Family Residential District	GENERAL AGRICULTURE
030252000	W2555 FONTANA WAY	Single-Family Residential District	GENERAL AGRICULTURE
030252100	W2565 FONTANA WAY	Single-Family Residential District	GENERAL AGRICULTURE
030252200	W2575 FONTANA WAY	Single-Family Residential District	GENERAL AGRICULTURE
030252300	W2568 BUCHANAN RD	Single-Family Residential District	GENERAL AGRICULTURE
030252400	W2558 BUCHANAN RD	Single-Family Residential District	GENERAL AGRICULTURE
030252500	W2544 BUCHANAN RD	Single-Family Residential District	GENERAL AGRICULTURE
030252600	W2534 BUCHANAN RD	Single-Family Residential District	GENERAL AGRICULTURE
030252800	W151 COUNTY RD Z	Rural Residential District	GENERAL AGRICULTURE
030252900	N871 OUTAGAMIE RD	Rural Residential District	GENERAL AGRICULTURE
030254002		Public & Institutional District	INDUSTRIAL
030254100	N815 OUTAGAMIE RD	Rural Residential District	GENERAL AGRICULTURE
030254300	W164 ROLLING ACRES CT	Rural Residential District	GENERAL AGRICULTURE
030254400	W178 ROLLING ACRES CT	Rural Residential District	GENERAL AGRICULTURE
030254500	W182 ROLLING ACRES CT	Rural Residential District	GENERAL AGRICULTURE
030254600	W177 ROLLING ACRES CT	Rural Residential District	GENERAL AGRICULTURE
030254700	W161 ROLLING ACRES CT	Rural Residential District	GENERAL AGRICULTURE
030254800	W131 ERV CT	Rural Residential District	GENERAL AGRICULTURE
030254900	W149 ERV CT	Rural Residential District	GENERAL AGRICULTURE
030255000	W163 ERV CT	Rural Residential District	GENERAL AGRICULTURE
030255100	W175 ERV CT	Rural Residential District	GENERAL AGRICULTURE
030255200	W178 ERV CT	Rural Residential District	GENERAL AGRICULTURE
030255300	W174 ERV CT	Rural Residential District	GENERAL AGRICULTURE
030255400	W170 ERV CT	Rural Residential District	GENERAL AGRICULTURE
030255500	W158 ERV CT	Rural Residential District	GENERAL AGRICULTURE
030255600	W140 ERV CT	Rural Residential District	GENERAL AGRICULTURE
030255700	N333 OUTAGAMIE RD	Rural Residential District	GENERAL AGRICULTURE
030255800	N327 OUTAGAMIE RD	Rural Residential District	GENERAL AGRICULTURE
030255900	W394 HAWKS NEST LA	Rural Residential District	GENERAL AGRICULTURE
030256000		Rural Residential District	GENERAL AGRICULTURE
030256100	W348 HAWKS NEST LA	Rural Residential District	GENERAL AGRICULTURE
030256200	W344 HAWKS NEST LA	Rural Residential District	GENERAL AGRICULTURE
030256300	W336 HAWKS NEST LA	Rural Residential District	GENERAL AGRICULTURE
030256400	W314 HAWKS NEST LA	Rural Residential District	GENERAL AGRICULTURE
030256500	W296 HAWKS NEST LA	Rural Residential District	GENERAL AGRICULTURE
030256600	W274 HAWKS NEST LA	Rural Residential District	GENERAL AGRICULTURE
030256700	W258 HAWKS NEST LA	Rural Residential District	GENERAL AGRICULTURE
030256800	W242 HAWKS NEST LA	Rural Residential District	GENERAL AGRICULTURE
030256900	W224 HAWKS NEST LA	Rural Residential District	GENERAL AGRICULTURE
030257000	W212 HAWKS NEST LA	Rural Residential District	GENERAL AGRICULTURE
030257100	W198 HAWKS NEST LA	Rural Residential District	GENERAL AGRICULTURE
030257200	W184 HAWKS NEST LA	Rural Residential District	GENERAL AGRICULTURE
030257300	W168 HAWKS NEST LA	Rural Residential District	GENERAL AGRICULTURE
030257400		Rural Residential District	GENERAL AGRICULTURE
030257500	W139 HAWKS NEST LA	Rural Residential District	GENERAL AGRICULTURE
030257600	W191 HAWKS NEST LA	Rural Residential District	GENERAL AGRICULTURE
030257700	W237 HAWKS NEST LA	Rural Residential District	GENERAL AGRICULTURE
030257800		Rural Residential District	GENERAL AGRICULTURE
030257900	W353 MARSH HAWK CT	Rural Residential District	GENERAL AGRICULTURE
030258000	W367 MARSH HAWK CT	Rural Residential District	GENERAL AGRICULTURE
030258100		Rural Residential District	GENERAL AGRICULTURE
030258200	N816 POWERS RD	Rural Residential District	GENERAL AGRICULTURE
030258300	W368 MARSH HAWK CT	Rural Residential District	GENERAL AGRICULTURE
030258400	W360 MARSH HAWK CT	Rural Residential District	GENERAL AGRICULTURE
030258500	W281 HAWKS NEST LA	Rural Residential District	GENERAL AGRICULTURE
030258600	W325 HAWKS NEST LA	Rural Residential District	GENERAL AGRICULTURE
030258700		Rural Residential District	GENERAL AGRICULTURE
030258800	W393 HAWKS NEST LA	Rural Residential District	GENERAL AGRICULTURE
030259100	N1631 OUTAGAMIE RD	Rural Residential District	GENERAL AGRICULTURE
030259200	N1625 OUTAGAMIE RD	Rural Residential District	GENERAL AGRICULTURE
030259300	N1613 OUTAGAMIE RD	Rural Residential District	GENERAL AGRICULTURE
030259400	N615 OUTAGAMIE RD	Rural Residential District	GENERAL AGRICULTURE

030259500	N623 OUTAGAMIE RD	Rural Residential District	GENERAL AGRICULTURE
030259600	N639 OUTAGAMIE RD	Rural Residential District	GENERAL AGRICULTURE
030259700	N655 OUTAGAMIE RD	Rural Residential District	GENERAL AGRICULTURE
030259800	N671 OUTAGAMIE RD	Rural Residential District	GENERAL AGRICULTURE
030259900	N689 OUTAGAMIE RD	Rural Residential District	GENERAL AGRICULTURE
030260000	W123 SUNSET VIEW CI	Rural Residential District	GENERAL AGRICULTURE
030260100	W153 SUNSET VIEW CI	Rural Residential District	GENERAL AGRICULTURE
030260200	W161 SUNSET VIEW CI	Rural Residential District	GENERAL AGRICULTURE
030260300	W148 SUNSET VIEW CI	Rural Residential District	GENERAL AGRICULTURE
030260400	W140 SUNSET VIEW CI	Rural Residential District	GENERAL AGRICULTURE
030260500	W132 SUNSET VIEW CI	Rural Residential District	GENERAL AGRICULTURE
030260600	W124 SUNSET VIEW CI	Rural Residential District	GENERAL AGRICULTURE
030260700	W108 SUNSET VIEW CI	Rural Residential District	GENERAL AGRICULTURE
030260800		Rural Residential District	GENERAL AGRICULTURE
030260900	N745 OUTAGAMIE RD	Rural Residential District	GENERAL AGRICULTURE
030261100	W107 MEADOW RIDGE TR	Rural Residential District	GENERAL AGRICULTURE
030261200	W123 MEADOW RIDGE TR	Rural Residential District	GENERAL AGRICULTURE
030261300	W141 MEADOW RIDGE TR	Rural Residential District	GENERAL AGRICULTURE
030261401	W157 MEADOW RIDGE TR	Rural Residential District	GENERAL AGRICULTURE
030261402	W173 MEADOW RIDGE TR	Rural Residential District	GENERAL AGRICULTURE
030261700	W185 MEADOW RIDGE TR	Rural Residential District	GENERAL AGRICULTURE
030261800	W191 MEADOW RIDGE TR	Rural Residential District	GENERAL AGRICULTURE
030261900	W203 MEADOW RIDGE TR	Rural Residential District	GENERAL AGRICULTURE
030262000	W182 MEADOW RIDGE TR	Rural Residential District	GENERAL AGRICULTURE
030262100	N757 BEVERLYCREST CT	Rural Residential District	GENERAL AGRICULTURE
030262200	N771 BEVERLYCREST CT	Rural Residential District	GENERAL AGRICULTURE
030262300	N779 BEVERLYCREST CT	Rural Residential District	GENERAL AGRICULTURE
030262400	N785 BEVERLYCREST CT	Rural Residential District	GENERAL AGRICULTURE
030262500	N788 BEVERLYCREST CT	Rural Residential District	GENERAL AGRICULTURE
030262600	N776 BEVERLYCREST CT	Rural Residential District	GENERAL AGRICULTURE
030262700	N768 BEVERLYCREST CT	Rural Residential District	GENERAL AGRICULTURE
030262800	W164 MEADOW RIDGE TR	Rural Residential District	GENERAL AGRICULTURE
030262900	W150 MEADOW RIDGE TR	Rural Residential District	GENERAL AGRICULTURE
030263000	W138 MEADOW RIDGE TR	Rural Residential District	GENERAL AGRICULTURE
030263100	W130 MEADOW RIDGE TR	Rural Residential District	GENERAL AGRICULTURE
030263200	W118 MEADOW RIDGE TR	Rural Residential District	GENERAL AGRICULTURE
030263300	W108 MEADOW RIDGE TR	Rural Residential District	GENERAL AGRICULTURE
030263400	W215 SUNSET VIEW CI	Public & Institutional District	GENERAL AGRICULTURE
310		Public & Institutional District	SINGLE FAMILY RESIDENTIAL
320		Single-Family Residential District	GENERAL AGRICULTURE
320		Rural Residential District	GENERAL AGRICULTURE
325088701	2550 HAAS RD	Single-Family Residential District	GENERAL AGRICULTURE
330		Single-Family Residential District	GENERAL AGRICULTURE
340		Public & Institutional District	SINGLE FAMILY RESIDENTIAL
340		Public & Institutional District	SINGLE FAMILY RESIDENTIAL
340		Public & Institutional District	TWO FAMILY RESIDENTIAL



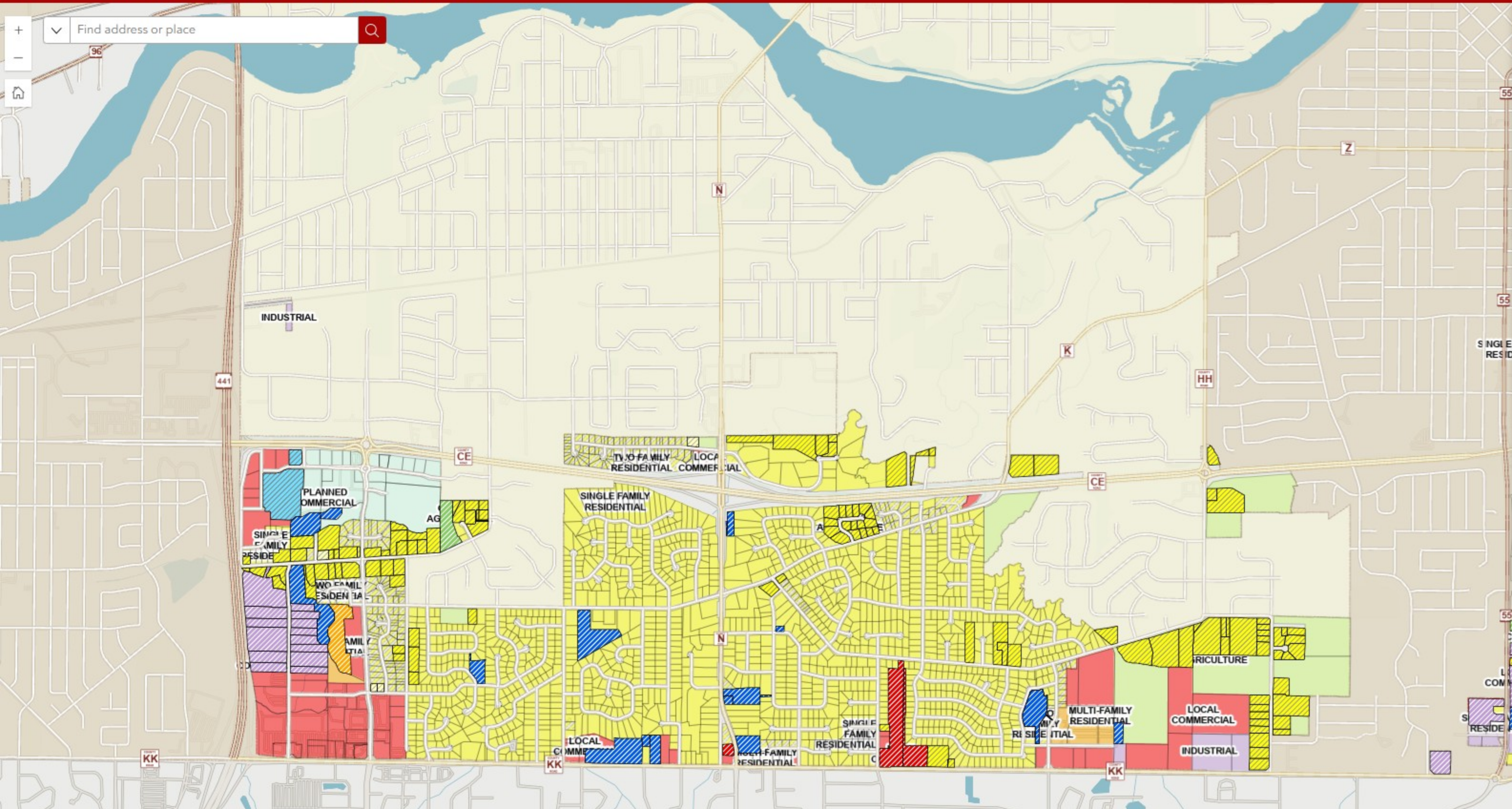
### Legend

**Proposed Rezoning set to Yes**

- General Agricultural District
- Rural Residential District
- Single-Family Residential District
- Single- and Two-Family Residential District
- Two-Family Residential District
- Medium-Density Residential District
- Multifamily Residential District
- Local Commercial District
- Regional Commercial District
- Planned Commercial District
- Industrial District
- Public & Institutional District
- Conservancy

**Basemap Layers**

- Highway Labels
- Streets
- CLASS
- ALY



Find address or place

## Legend

- Proposed Rezoning set to Yes**
- General Agricultural District
  - Rural Residential District
  - Single-Family Residential District
  - Single- and Two-Family Residential District
  - Two-Family Residential District
  - Medium-Density Residential District
  - Multifamily Residential District
  - Local Commercial District
  - Regional Commercial District
  - Planned Commercial District
  - Industrial District
  - Public & Institutional District
  - Conservancy

## Basemap Layers

- Highway Labels
- Streets
- CLASS
- ALLY